

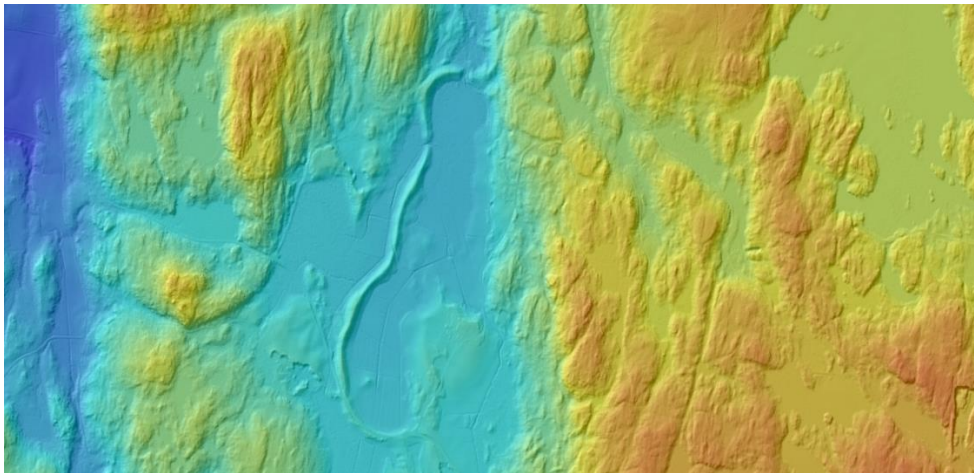
## PRODUCT DESCRIPTION

---

# Terrain Model Download, grid I+

DOCUMENT VERSION: 1.1

*Figure 1. Example elevation data.*



## Table of contents

<b>1</b>	<b>GENERAL DESCRIPTION</b>	<b>3</b>
1.1	CONTENTS	3
1.2	GEOGRAPHIC COVERAGE	3
1.3	DELIVERY TILES	3
1.4	REFERENCE SYSTEM	3
<b>2</b>	<b>QUALITY DESCRIPTION</b>	<b>3</b>
2.1	PURPOSE AND UTILITY	3
2.2	DATA CAPTURE	3
2.3	MAINTENANCE	4
2.3.1	<i>Maintenance frequency</i>	4
2.4	METADATA	4
2.4.1	<i>Description of image file</i>	4
2.4.2	<i>Description of the content in the metadata file</i>	6
<b>3</b>	<b>CONTENTS OF THE DELIVERY</b>	<b>7</b>
3.1	FOLDER STRUCTURE AT DELIVERY	7
3.2	DELIVERY FORMAT	7
3.3	SET OF FILES AND CONTENTS	8
3.3.1	<i>Coordinate-transformed grid</i>	8

## I General description

### I.1 Contents

The product *Grid1+* consists of a terrain model (DTM) in grid form with a resolution of 1 metre.

Elevation data is collected using airborne laser scanning and then processed. Based on the laser points which are classified as ground points a terrain model in the form of a grid, also known as a raster, is produced.

The product is delivered with metadata which details origin and processing history.

### I.2 Geographic coverage

Nationwide.

### I.3 Delivery tiles

The smallest unit for processing and delivery corresponds to a tile measuring 2.5 x 2.5 km geographically adjusted to the index system in SWEREF 99 TM.

### I.4 Reference system

In plane: SWEREF 99 TM (can also be transformed and delivered in any regional SWEREF zone).

In height: RH 2000.

## 2 Quality description

See more detailed description of data capture, maintenance and quality for the National Elevation Model in the document *Quality description of National Elevation Model*, which can be found alongside this product description under [Terrain Model Download, grid 1+](#) at Lantmäteriet's website.

### 2.1 Purpose and utility

The terrain model can be used in agriculture and forestry, emergency preparedness, planning, development, geology, archaeology and orienteering maps.

### 2.2 Data capture

The product is based on the National Elevation Model in grid form with 1 m resolution.

Produkten baseras på nationella höjdmodellen i form av ett 1-meters grid.

A comprehensive terrain model in the form of a grid is created from laser points classified as ground and water. The calculation is done through linear interpolation in a TIN (Triangulated Irregular Network).

## 2.3 Maintenance

The terrain model is updated through aerial image matching and with laser data.

See description of these methods in *Quality description of National Elevation Model*

### 2.3.1 MAINTENANCE FREQUENCY

The progress of the maintenance is presented at Lantmäteriet's website under [Planer och utfall - Produktionsstatus](#).

## 2.4 Metadata

Metadata is supplied with the product as described below.

### 2.4.1 DESCRIPTION OF IMAGE FILE

Every delivered grid file is accompanied by an image illustrating the degree of detail with which the terrain model can be expected to represent the ground surface.

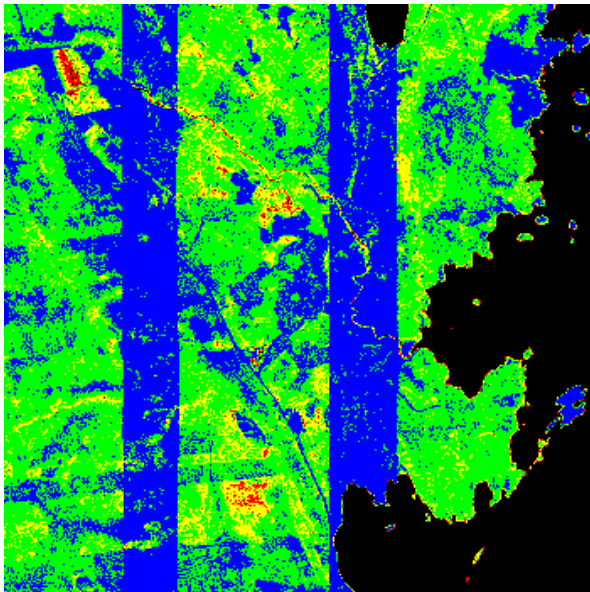
The image has a resolution of 10 metres and shows the average point density of ground points in laser data. The point density is illustrated with colours as per the table below.

*Table 1. Colour presentation and point density in the image file.*

Colour	Point density	Comment
Blue	> 1 points/m <sup>2</sup>	On open areas and on side overlaps there might be more points on ground than the specified minimum requirement of point density in laser data.
Green	0.5-1 points/m <sup>2</sup>	
Yellow	0.25-0.5 points/m <sup>2</sup>	
Red	< 0.25 points/m <sup>2</sup>	The terrain model may have a diminished, in some case significantly diminished, degree of detail in these areas. This might be caused by dense forest, steep slopes or water.

Black	0 points/m <sup>2</sup>	Black colour in the image is due to either the water surfaces having been removed by masking or holes in the laser point cloud. Holes in the laser point cloud are due to poor reflection or dense vegetation, which may cause a total loss of points on ground. Poor reflection occurs on, for example, water, buildings with black roofs or new asphalt.
-------	-------------------------	--

Figure 2. Example with point density of ground for a scanning area.



#### 2.4.2 DESCRIPTION OF THE CONTENT IN THE METADATA FILE

Every delivered grid file is accompanied by a metadata file (GeoJSON). The metadata file contains geometry and attributes as shown below.

[GeoJSON-schema](#) for download

*Table 2. Description and example of contents in metadata file.*

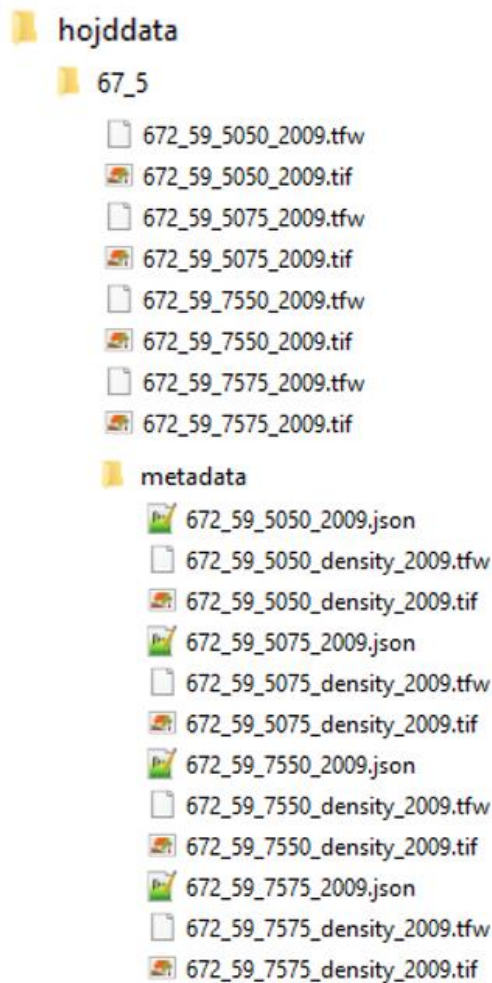
Field	Description	Example
	Geometry, polygon The approximate area for the measurement session	
<b>insamlingsdatum</b>	Date for data capture	2010-04-02
<b>ursprung</b>	Origin	Lantmäteriet
<b>matmetod</b>	Survey technique 1 Aerial laser scanning 4 Aerial photography, image matching	1
<b>lagesosakerhet-Plan</b>	The approximate horizontal accuracy (meter)	0.3
<b>lagesosakerhetHojd</b>	The approximate vertical accuracy (meter)	0.1
<b>klassificeringsniva</b>	Classification level	3

### 3 Contents of the delivery

#### 3.1 Folder structure at delivery

The terrain model and metadata are supplied as shown in the example below.

Figure 3. Example of contents in a delivery.



#### 3.2 Delivery format

Grid data is supplied in GeoTIFF-format (LZW-compressed).

Image file is supplied in tiff-format and metadata file in GeoJSON-format.

### 3.3 Set of files and contents

Table 3. Description of files included in the delivery.

Filename (example)	Description
672_59_5050_2009.tif (LZW-compressed)	The file name includes the co-ordinates of the lower left corner of the tile and the year of data capture.
672_59_5050_2009.json	Metadata presenting origin and level of processing, see description in section Metadata.
672_59_5050_density_2009.tif	A raster file presenting the point density for those laser points that have been classified as ground, see description in section Metadata.
672_59_5050_density_201809.tfw	Geo-referencing file for the image file above.
leverans.json	Overview of tiles (2.5 x 2.5 km) included in the delivery, in GeoJSON-format

#### 3.3.1 COORDINATE-TRANSFORMED GRID

To reproject elevation data from SWEREF 99 TM to a regional SWEREF-zone the data will go through both a rotation of the raster and a resampling of the raster cells. An interpolation of the height values is necessary in order to adjust the elevation data to the regional SWEREF-zone grid. The method used is a bicubical interpolation method, as this method takes the surrounding terrain into account. Tests made at Lantmäteriet showed that the loss of quality in the resulting reprojected grid was negligible.

Files delivered in SWEREF 99 TM local zones are named with a zone prefix first in the file name, for example 1200\_.