

Ortnamn Nedladdning Inspire v1.0 - teknisk beskrivning

Dokumentversion 1.0

Gränssnittsdefinition

Åtkomstpunkt

Atomflöde Produktion	https://api.lantmateriet.se/ortnamn/atom/v1
Atomflöde Verifiering	https://api-ver.lantmateriet.se/ortnamn/atom/v1

Inspire

Information

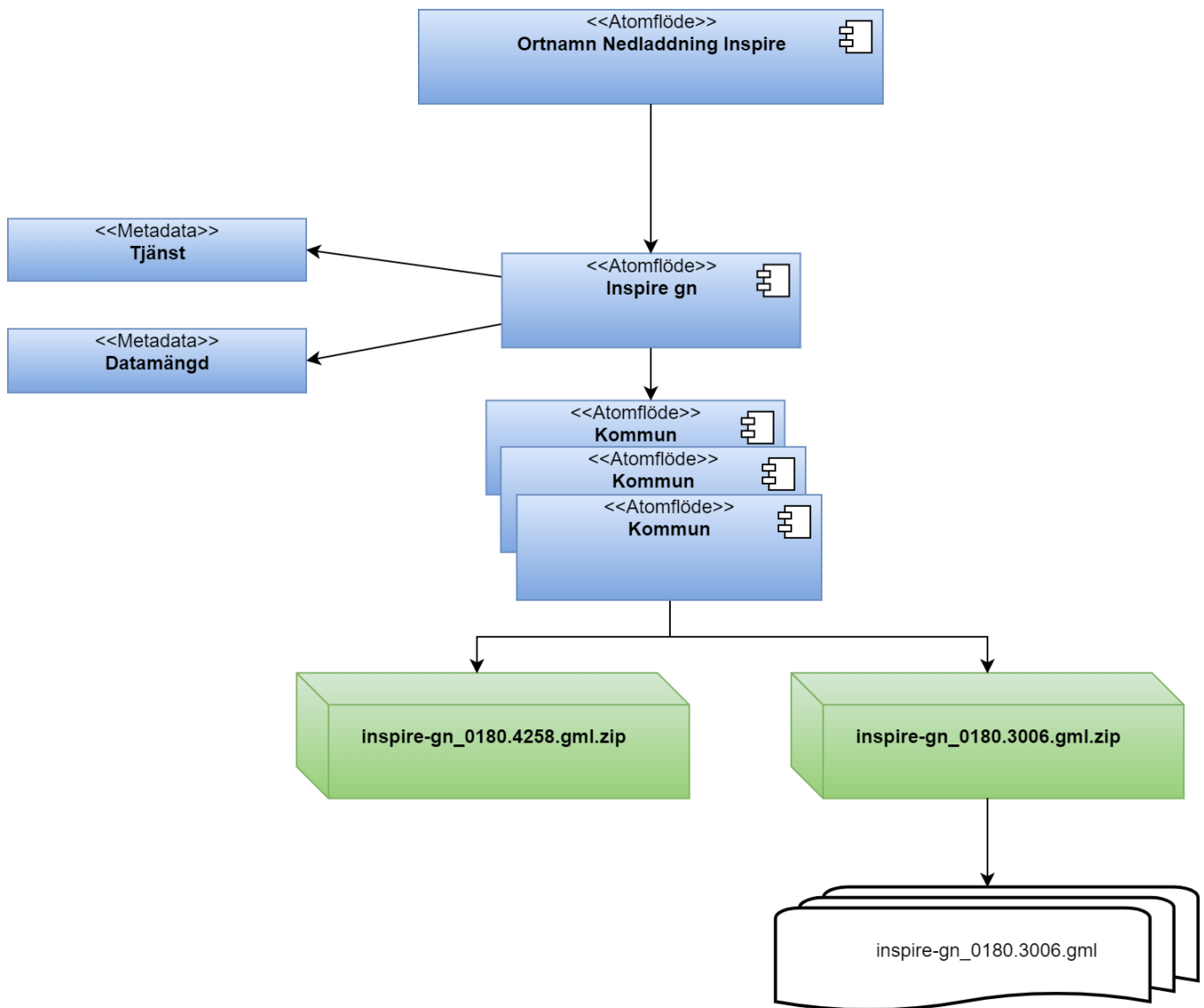
Inspire Geographical Names	https://inspire.ec.europa.eu/id/document/tg/gn
Inspire tekniska riktlinjer	http://inspire.jrc.ec.europa.eu/documents/Network_Services/Technical_Guidance_Download_Services_v3.1.pdf

Schema

Inspire Geographical Names	http://inspire.ec.europa.eu/schemas/gn/4.0/GeographicalNames.xsd
----------------------------	---

Atomflöde

Logisk struktur



Exempel

Atomflöde för tema, Inspire Geographical Names

Exempel

```
<?xml version="1.0" encoding="UTF-8"?>
<feed xml:lang="sv">
  <id>
    https://api.lantmateriet.se/ortnamn/atom/v1/inspire/gn
  </id>
  <title>Inspire Geographical Names</title>
  <subtitle>
    Fördefinierade datamängder för Inspire Geographical Names
  </subtitle>
  <updated>2019-11-29T08:43:41+01:00</updated>
  <link href="https://api.lantmateriet.se/ortnamn/atom/v1/inspire/gn" rel="self" type="application/atom+xml"
hreflang="sv" title="Detta dokument"/>
  <link href="https://www.geodata.se/geodataportalen/srv/swe/csw-inspire?
request=GetRecordById&service=CSW&version=2.0.2&elementSetName=full&id=27043e7a-5403-4f55-b4fb-
789d55cfff6&outputSchema=csw:IsoRecord" rel="describedby" type="application/vnd.iso.19139+xml" hreflang="sv"
title="Metadata, nedladdningstjänst för Inspire Geographical Names"/>
  <link href="https://www.geodata.se/geodataportalen/GetMetaDataById?id=27043e7a-5403-4f55-b4fb-789d55cfff6"
rel="alternate" type="text/html" hreflang="sv" title="Metadata, nedladdningstjänst för Inspire Geographical
Names (HTML)"/>
  <rights>
    Produkten omfattas av upphovsrätt. Avtal för användning krävs, avgifter för användning tas ut.
  </rights>
  <author>
    <name>Geodatasupport</name>
    <email>geodatasupport@lm.se</email>
  </author>
  <entry>
    <id>
      https://api.lantmateriet.se/ortnamn/atom/v1/inspire/gn/0114
    </id>
    <title>Inspire Geographical Names, Upplands väsby (0114)</title>
    <summary>
      Fördefinierad datamängd Inspire Geographical Names, Upplands väsby (0114)
    </summary>
    <updated>2019-11-26T08:39:48+01:00</updated>
    <inspire_dls:spatial_dataset_identifier_code>0114</inspire_dls:spatial_dataset_identifier_code>
    <inspire_dls:spatial_dataset_identifier_namespace>SE.LM.GN</inspire_dls:
spatial_dataset_identifier_namespace>
    <link href="https://api.lantmateriet.se/ortnamn/atom/v1/inspire/gn/0114" rel="alternate" type="
application/atom+xml" hreflang="sv" title="Inspire Geographical Names, Upplands väsby (0114)"/>
    <link href="https://www.geodata.se/geodataportalen/srv/swe/csw-inspire?
request=GetRecordById&service=CSW&version=2.0.2&elementSetName=full&id=21f64a74-ef54-42db-88e9-
adb9bb533dc8&outputSchema=csw:IsoRecord" rel="describedby" type="application/vnd.iso.19139+xml" hreflang="sv"
title="Metadata för datamängden Inspire Geographical Names"/>
    <link href="https://www.geodata.se/geodataportalen/GetMetaDataById?id=21f64a74-ef54-42db-88e9-
adb9bb533dc8" rel="alternate" type="text/html" hreflang="sv" title="Metadata för datamängden Inspire
Geographical Names (HTML)"/>
    <category term="http://www.opengis.net/def/crs/EPSS/0/3006" label="SWEREF99 TM"/>
    <category term="http://www.opengis.net/def/crs/EPSS/0/4258" label="ETRS89"/>
    <georss:polygon>
      17.799253161678266 59.457316999390194 17.799253161678266 59.575556785260815 18.0145254758554
59.575556785260815 18.0145254758554 59.457316999390194 17.799253161678266 59.457316999390194
    </georss:polygon>
  </entry>
  ...
</feed>
```

Atomflöde för datamängd (Stockholms kommun), Inspire Geographical Names

Exempel

```
<feed xml:lang="sv">
  <id>
    https://api.lantmateriet.se/ortnamn/atom/v1/inspire/gn/0180
  </id>
  <title>
    Fördefinierad datamängd Inspire Geographical Names, Stockholm (0180)
  </title>
  <subtitle>
    Fördefinierad datamängd i olika referenssystem och format
  </subtitle>
  <updated>2019-11-26T08:46:13+01:00</updated>
  <link href="https://api.lantmateriet.se/ortnamn/atom/v1/inspire/gn/0180" rel="self" type="application
/atom+xml" hreflang="sv" title="Detta dokument"/>
  <link href="https://api.lantmateriet.se/ortnamn/atom/v1/inspire/gn" rel="up" type="application/atom+xml"
hreflang="sv" title="Inspire Geographical Names"/>
  <link href="http://inspire.ec.europa.eu/featureconcept/NamedPlace" rel="describedby" type="text/html"
title="Featurtype Named Place"/>
  <rights>
    Produkten omfattas av upphovsrätt. Avtal för användning krävs, avgifter för användning tas ut.
  </rights>
  <author>
    <name>Geodatasupport</name>
    <email>geodatasupport@lm.se</email>
  </author>
  <entry>
    <id>
      https://api.lantmateriet.se/ortnamn/atom/v1/inspire/gn/0180/dataset?srs=3006&format=application/zip
    </id>
    <title>
      Inspire Geographical Names, Stockholm (0180) [EPSG:3006, GML]
    </title>
    <updated>2019-11-26T08:46:13+01:00</updated>
    <link href="https://api.lantmateriet.se/ortnamn/atom/v1/inspire/gn/0180/dataset?
srs=3006&format=application/zip" rel="alternate" type="application/zip" hreflang="sv" title="inspire-gn_0180.
3006.gml.zip" length="36709"/>
    <category term="http://www.opengis.net/def/crs/EPSG/0/3006" label="SWEREF99 TM"/>
  </entry>
  <entry>
    <id>
      https://api.lantmateriet.se/ortnamn/atom/v1/inspire/gn/0180/dataset?srs=4258&format=application/zip
    </id>
    <title>
      Inspire Geographical Names, Stockholm (0180) [EPSG:4258, GML]
    </title>
    <updated>2019-11-25T21:57:41+01:00</updated>
    <link href="https://api.lantmateriet.se/ortnamn/atom/v1/inspire/gn/0180/dataset?
srs=4258&format=application/zip" rel="alternate" type="application/zip" hreflang="sv" title="inspire-gn_0180.
4258.gml.zip" length="44620"/>
    <category term="http://www.opengis.net/def/crs/EPSG/0/4258" label="ETRS89"/>
  </entry>
</feed>
```

Datamängd GML (Stockholms kommun), Inspire Geographical Names

Exempel

```

<?xml version="1.0" encoding="UTF-8"?>
<wfs:FeatureCollection xmlns:gts="http://www.isotc211.org/2005/gts" xmlns:xlink="http://www.w3.org/1999/xlink"
xmlns:gmd="http://www.isotc211.org/2005/gmd" xmlns:gml="http://www.opengis.net/gml/3.2" xmlns:gco="http://www.
isotc211.org/2005/gco" xmlns:gsr="http://www.isotc211.org/2005/gsr" xmlns:gss="http://www.isotc211.org/2005
/gss" xmlns:base="http://inspire.ec.europa.eu/schemas/base/3.3" xmlns:wfs="http://www.opengis.net/wfs/2.0"
xmlns:xsi="http://www.w3.org/2001/XMLSchema-instance" xsi:schemaLocation="http://inspire.ec.europa.eu/schemas/gn
/4.0 http://inspire.ec.europa.eu/schemas/gn/4.0/GeographicalNames.xsd http://www.opengis.net/wfs/2.0
http://schemas.opengis.net/wfs/2.0/wfs.xsd http://www.opengis.net/gml/3.2 http://schemas.opengis.net/gml/3.2.1
/gml.xsd" timeStamp="2019-11-29T12:26:42.603429091+01:00" numberMatched="674" numberReturned="674">
  <wfs:boundedBy>
    <gml:Envelope srsName="urn:ogc:def:crs:EPSG::3006">
      <gml:lowerCorner>657442.000 6569609.000</gml:lowerCorner>
      <gml:upperCorner>682066.000 6592001.000</gml:upperCorner>
    </gml:Envelope>
  </wfs:boundedBy>
  <wfs:member>
    <gn:NamedPlace xmlns:gn="http://inspire.ec.europa.eu/schemas/gn/4.0" gml:id="SE.LM.GN.NP.27204">
      <gn:beginLifespanVersion>2007-03-19T00:00:00+01:00</gn:beginLifespanVersion>
      <gn:endLifespanVersion>9999-12-31T23:59:59+01:00</gn:endLifespanVersion>
      <gn:geometry>
        <gml:Point gml:id="SE.LM.GN.NP.27204_GN_GEOMETRY" srsName="urn:ogc:def:crs:EPSG::3006"
srsDimension="2">
          <gml:pos>665730 6585364</gml:pos>
        </gml:Point>
      </gn:geometry>
      <gn:inspireId>
        <base:Identifier>
          <base:localId>27204</base:localId>
          <base:namespace>SE.LM.GN.NP</base:namespace>
        </base:Identifier>
      </gn:inspireId>
      <gn:localType>
        <gmd:LocalisedCharacterString>VATTDRTX</gmd:LocalisedCharacterString>
      </gn:localType>
      <gn:mostDetailedViewingResolution>
        <gmd:MD_Resolution>
          <gmd:equivalentScale>
            <gmd:MD_RepresentativeFraction>
              <gmd:denominator>
                <gco:Integer>1</gco:Integer>
              </gmd:denominator>
            </gmd:MD_RepresentativeFraction>
          </gmd:equivalentScale>
        </gmd:MD_Resolution>
      </gn:mostDetailedViewingResolution>
      <gn:name>
        <gn:GeographicalName>
          <gn:language>swe</gn:language>
          <gn:nativeness xlink:href="http://inspire.ec.europa.eu/codelist/NativenessValue/endonym"><
/gn:nativeness>
          <gn:nameStatus xlink:href="http://inspire.ec.europa.eu/codelist/NameStatusValue/official"><
/gn:nameStatus>
          <gn:sourceOfName>Swedish Place Name Registry - Ortnamnsregistret</gn:sourceOfName>
          <gn:pronunciation xsi:nil="true" nilReason="http://inspire.ec.europa.eu/codelist
/VoidReasonValue/Unknown"></gn:pronunciation>
          <gn:spelling>
            <gn:SpellingOfName>
              <gn:text>Bällstaån</gn:text>
              <gn:script>Latn</gn:script>
            </gn:SpellingOfName>
          </gn:spelling>
        </gn:GeographicalName>
      </gn:name>
      <gn:type xlink:href="http://inspire.ec.europa.eu/codelist/NamedPlaceTypeValue/hydrography"></gn:
type>
    </gn:NamedPlace>
  </wfs:member>
  ...
</wfs:FeatureCollection>

```

