

# Marktäcke Nedladdning Inspire v1.1 - teknisk beskrivning



Dokumentversion 1.1

## Gränssnittsdefinition

Åtkomstpunkt

Atomflöde Produktion	<a href="https://api.lantmateriet.se/marktacke/atom/v1.1">https://api.lantmateriet.se/marktacke/atom/v1.1</a>
Atomflöde Verifiering	<a href="https://api-ver.lantmateriet.se/marktacke/atom/v1.1">https://api-ver.lantmateriet.se/marktacke/atom/v1.1</a>

## Inspire

Information

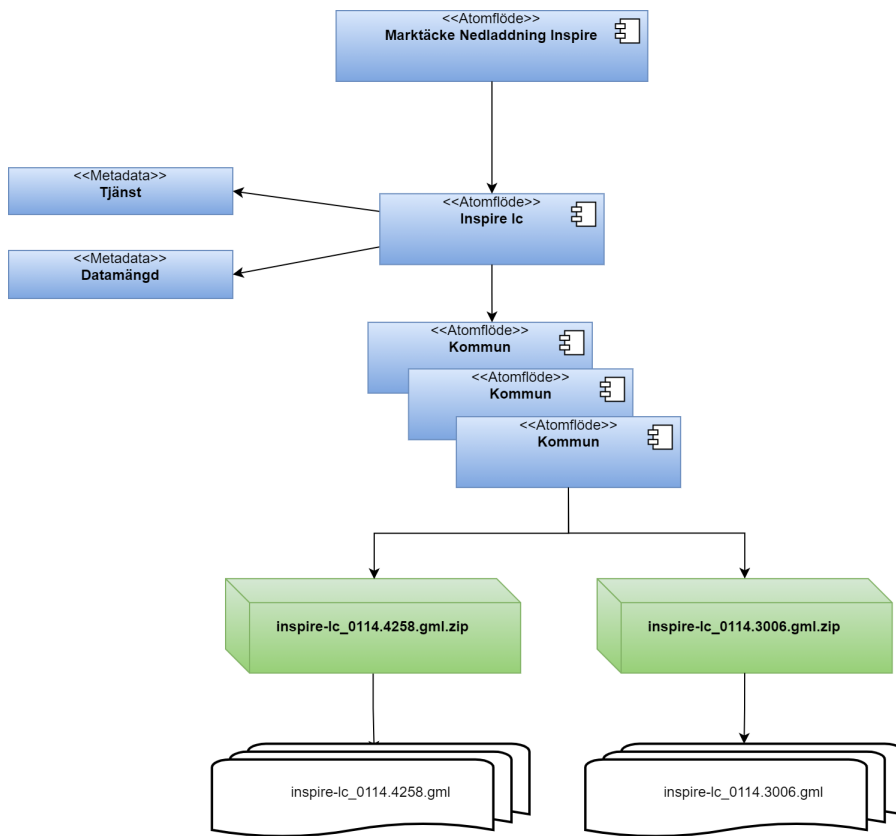
Inspire Land Cover	<a href="https://inspire.ec.europa.eu/id/document/tg/lc">https://inspire.ec.europa.eu/id/document/tg/lc</a>
Inspire tekniska riktlinjer	<a href="http://inspire.jrc.ec.europa.eu/documents/Network_Services/Technical_Guidance_Download_Services_v3.1.pdf">http://inspire.jrc.ec.europa.eu/documents/Network_Services/Technical_Guidance_Download_Services_v3.1.pdf</a>

Schema

Inspire Land Cover Vector	<a href="http://inspire.ec.europa.eu/schemas/lcv/4.0/LandCoverVector.xsd">http://inspire.ec.europa.eu/schemas/lcv/4.0/LandCoverVector.xsd</a>
---------------------------	---

## Atomflöde

### Logisk struktur



## Exempel

Atomflöde för tema, Inspire Land Cover

## Exempel

```
<?xml version="1.0" encoding="UTF-8"?>
<feed xmlns:georss="http://www.georss.org/georss" xmlns="http://www.w3.org/2005/Atom" xmlns:inspire_dls="
http://inspire.ec.europa.eu/schemas/inspire_dls/1.0" xml:lang="sv">
  <id>https://api.lantmateriet.se/marktacke/atom/v1.1/inspire/lc</id>
  <title>Inspire Land Cover</title>
  <subtitle>Fördefinierade datamängder för Inspire Land Cover</subtitle>
  <updated>2021-09-20T22:38:07+02:00</updated>
  <link href="https://api.lantmateriet.se/marktacke/atom/v1.1/inspire/lc" rel="self" type="application
/atom+xml" hreflang="sv" title="Detta dokument"/>
  <link href="https://www.geodata.se/geodataportalen/srv/swe/csw-inspire?
request=GetRecordById&service=CSW&version=2.0.2&elementSetName=full&id=675a56b5-ac77-4eb0-980c-
ecd4b0b7e462&outputSchema=csw:IsoRecord" rel="describedby" type="application/xml" hreflang="sv" title="
Metadata, nedladdningstjänst för Inspire Land Cover"/>
  <link href="https://www.geodata.se/geodataportalen/GetMetaDataById?id=675a56b5-ac77-4eb0-980c-ecd4b0b7e462"
rel="describedby" type="text/html" hreflang="sv" title="Metadata, nedladdningstjänst för Inspire Land Cover
(HTML)"/>
  <link href="https://www.geodata.se/geodataportalen/opensearch/swe/675a56b5-ac77-4eb0-980c-ecd4b0b7e462
/OpenSearchDescription.xml" rel="search" type="application/opensearchdescription+xml" hreflang="sv" title="
Opensearch-dokument för Inspireanpassad nedladdningstjänst"/>
  <rights>Produkten omfattas av upphovsrätt. Avtal för användning krävs, avgifter för användning tas ut.<
/rights>
  <author>
    <name>Geodatasupport</name>
    <email>geodatasupport@lm.se</email>
  </author>
  <entry>
    <id>https://api.lantmateriet.se/marktacke/atom/v1.1/inspire/lc/0114</id>
    <title>Inspire Land Cover, Upplands väsby (0114)</title>
    <summary>Fördefinierad datamängd Inspire Land Cover, Upplands väsby (0114)</summary>
    <updated>2021-09-20T22:15:15+02:00</updated>
    <inspire_dls:spatial_dataset_identifier_code>a9a1a87d-4088-4456-9a1e-9502541ddbd8</inspire_dls:
spatial_dataset_identifier_code>
    <inspire_dls:spatial_dataset_identifier_namespace>SE.LM.LC.0114</inspire_dls:
spatial_dataset_identifier_namespace>
    <link href="https://api.lantmateriet.se/marktacke/atom/v1.1/inspire/lc/0114" rel="alternate" type="
application/atom+xml" hreflang="sv" title="Inspire Land Cover, Upplands väsby (0114)"/>
    <link href="https://www.geodata.se/geodataportalen/srv/swe/csw-inspire?
request=GetRecordById&service=CSW&version=2.0.2&elementSetName=full&id=3542ba2c-db3e-409b-b357-
723864763373&outputSchema=csw:IsoRecord" rel="describedby" type="application/xml" hreflang="sv" title="Metadata
för datamängden Inspire Land Cover"/>
    <link href="https://www.geodata.se/geodataportalen/GetMetaDataById?id=3542ba2c-db3e-409b-b357-
723864763373" rel="describedby" type="text/html" hreflang="sv" title="Metadata för datamängden Inspire Land
Cover (HTML)"/>
    <category term="http://www.opengis.net/def/crs/EPSS/0/3006" label="SWEREF99 TM"/>
    <category term="http://www.opengis.net/def/crs/EPSS/0/4258" label="ETRS89"/>
    <georss:polygon>17.79925316168656 59.45731699948007 17.79925316168656 59.57555678533095
18.014525475869632 59.57555678533095 18.014525475869632 59.45731699948007 17.79925316168656 59.45731699948007<
/georss:polygon>
  </entry>
</feed>
```

Atomflöde för datamängd (Upplands Väsby kommun), Inspire Land Cover

## Exempel

```
<?xml version="1.0" encoding="UTF-8"?>
<feed xmlns:georss="http://www.georss.org/georss" xmlns="http://www.w3.org/2005/Atom" xmlns:inspire_dls="
http://inspire.ec.europa.eu/schemas/inspire_dls/1.0" xml:lang="sv">
  <id>https://api.lantmateriet.se/marktacke/atom/v1.1/inspire/lc/0114</id>
  <title>Fördefinierad datamängd Inspire Land Cover, Upplands väsby (0114)</title>
  <subtitle>Fördefinierad datamängd i olika referenssystem och format</subtitle>
  <updated>2021-09-20T22:15:15+02:00</updated>
  <link href="https://api.lantmateriet.se/marktacke/atom/v1.1/inspire/lc/0114" rel="self" type="application
/atom+xml" hreflang="sv" title="Detta dokument"/>
  <link href="https://api.lantmateriet.se/marktacke/atom/v1.1/inspire/lc" rel="up" type="application
/atom+xml" hreflang="sv" title="Inspire Land Cover"/>
  <link href="http://inspire.ec.europa.eu/featureconcept/LandCoverUnit/" rel="describedby" type="text/html"
title="Featurtype Land Cover Unit"/>
  <link href="http://inspire.ec.europa.eu/featureconcept/LandCoverDataset/" rel="describedby" type="text
/html" title="Featurtype Land Cover Data set"/>
  <rights>Produkten omfattas av upphovsrätt. Avtal för användning krävs, avgifter för användning tas ut.<
/rights>
  <author>
    <name>Geodatasupport</name>
    <email>geodatasupport@lm.se</email>
  </author>
  <entry>
    <id>https://api.lantmateriet.se/marktacke/atom/v1.1/inspire/lc/0114/dataset?srs=3006&format=application
/zip</id>
    <title>Inspire Land Cover, Upplands väsby (0114) [EPSG:3006, GML]</title>
    <updated>2021-09-20T20:40:39+02:00</updated>
    <link href="https://api.lantmateriet.se/marktacke/atom/v1.1/inspire/lc/0114/dataset?
srs=3006&format=application/zip" rel="alternate" type="application/zip" hreflang="sv" title="inspire-lc_0114.
3006.gml.zip" length="901242"/>
    <category term="http://www.opengis.net/def/crs/EPSSG/0/3006" label="SWEREF99 TM"/>
  </entry>
  <entry>
    <id>https://api.lantmateriet.se/marktacke/atom/v1.1/inspire/lc/0114/dataset?srs=4258&format=application
/zip</id>
    <title>Inspire Land Cover, Upplands väsby (0114) [EPSG:4258, GML]</title>
    <updated>2021-09-20T22:15:15+02:00</updated>
    <link href="https://api.lantmateriet.se/marktacke/atom/v1.1/inspire/lc/0114/dataset?
srs=4258&format=application/zip" rel="alternate" type="application/zip" hreflang="sv" title="inspire-lc_0114.
4258.gml.zip" length="1439734"/>
    <category term="http://www.opengis.net/def/crs/EPSSG/0/4258" label="ETRS89"/>
  </entry>
</feed>
```

## Datamängd GML (Upplands Väsby kommun), Inspire Land Cover

### Exempel

```
<?xml version="1.0" encoding="UTF-8"?>
<wfs:FeatureCollection xmlns:lcv="http://inspire.ec.europa.eu/schemas/lcv/4.0" xmlns:base="http://inspire.ec.
europa.eu/schemas/base/3.3" xmlns:gml="http://www.opengis.net/gml/3.2" xmlns:xsi="http://www.w3.org/2001
/XMLSchema-instance" xmlns:wfs="http://www.opengis.net/wfs/2.0" xsi:schemaLocation="http://www.opengis.net/wfs
/2.0 http://schemas.opengis.net/wfs/2.0/wfs.xsd http://www.opengis.net/gml/3.2 http://schemas.opengis.net/gml/3.
2.1/gml.xsd" timeStamp="2021-09-20T22:15:13.09690125+02:00" numberMatched="1285" numberReturned="1285">
  <wfs:boundedBy>
    <gml:Envelope srsName="http://www.opengis.net/def/crs/EPSSG/0/4258">
      <gml:lowerCorner>59.458 17.810</gml:lowerCorner>
      <gml:upperCorner>59.571 18.015</gml:upperCorner>
    </gml:Envelope>
  </wfs:boundedBy>
  <wfs:member>
    <lcv:LandCoverDataset gml:id="SE.LM.LC.LCD.2acca0b24242ef21be547773717a7af3" srsName="
http://www.opengis.net/def/crs/EPSSG/0/4258" srsDimension="2">
      <lcv:inspireId>
        <base:Identifier>
          <base:localId>LandCoverClassValue</base:localId>
```

```

        <base:namespace>SE.LM.LC.LCD</base:namespace>
    </base:Identifier>
</lcv:inspireId>
<lcv:geometry>
    <gml:Polygon>
        <gml:exterior>
            <gml:LinearRing>
                <gml:posList>
                    59.458154972401815 17.810222197241746
59.57140603193377 17.810222197241746 59.57140603193377 18.01452547585812 59.458154972401815 18.01452547585812
59.458154972401815 17.810222197241746
                </gml:posList>
            </gml:LinearRing>
        </gml:exterior>
    </gml:Polygon>
</lcv:geometry>
<lcv:name>SE_LandCoverDataset</lcv:name>
<lcv:nomenclatureDocumentation>
    <lcn:LandCoverNomenclature xmlns:lcn="http://inspire.ec.europa.eu/schemas/lcn/4.
0">
        <lcn:nomenclatureCodeList>
            http://inspire.ec.europa.eu/codelist/LandCoverClassValue
        </lcn:nomenclatureCodeList>
        <lcn:responsibleParty>
            <base2:RelatedParty xmlns:base2="http://inspire.ec.europa.eu
/schemas/base2/2.0">
                <base2:organisationName>
                    <gco:CharacterString xmlns:gco="http://www.
isotc211.org/2005/gco">Lantmateriet</gco:CharacterString>
                </base2:organisationName>
            </base2:RelatedParty>
        </lcn:responsibleParty>
        <lcn:externalDescription>https://lantmateriet.se/svegeo
/MarktäckeBeskrivning/index.htm</lcn:externalDescription>
    </lcn:LandCoverNomenclature>
</lcv:nomenclatureDocumentation>
<lcv:member xmlns:xlink="http://www.w3.org/1999/xlink" xlink:href="#SE.LM.LC.LCU.
0025b8f1-ec70-4eee-9d01-1fbec6543051"/>
<lcv:member xmlns:xlink="http://www.w3.org/1999/xlink" xlink:href="#SE.LM.LC.LCU.
0c4ee4d1-0743-4bcb-bd27-5458b4b14968"/>
    </lcv:LandCoverDataset>
</wfs:member>
<wfs:member>
    <lcv:LandCoverUnit gml:id="SE.LM.LC.LCU.0025b8f1-ec70-4eee-9d01-1fbec6543051" srsName="
http://www.opengis.net/def/crs/EPSSG/0/4258" srsDimension="2">
        <lcv:inspireId>
            <base:Identifier>
                <base:localId>0025b8f1-ec70-4eee-9d01-1fbec6543051</base:localId>
                <base:namespace>SE.LM.LC.LCU</base:namespace>
            </base:Identifier>
        </lcv:inspireId>
        <lcv:beginLifespanVersion>2014-10-17T18:13:07+02:00</lcv:beginLifespanVersion>
        <lcv:endLifespanVersion xsi:nil="true" nilReason="other:unpopulated"/>
        <lcv:geometry>
            <gml:Surface gml:id="id-f2887de7-70f3-4058-a3b3-9f1221f5f435-0" srsName="
http://www.opengis.net/def/crs/EPSSG/0/4258" srsDimension="2">
                <gml:patches>
                    <gml:PolygonPatch>
                        <gml:exterior>
                            <gml:LinearRing>
                                <gml:posList>59.51298070077925
17.902997747810545 59.51298474121246 17.902745815271587 59.51300840297962 17.90268054076338 59.5131517555985
17.90267458409294 59.51333675805503 17.902656401938522 59.513422547856415 17.902713636831034 59.51343848711169
17.903130022115555 59.51345256245482 17.903427593513854 59.513449588729095 17.903612841909734 59.51344368352172
17.903745998837515 59.51340166520383 17.903780468732492 59.513288453885636 17.90378827056302 59.51311498763312
17.903792339694288 59.51295716785642 17.903760290031563 59.512917175259076 17.903668785047277 59.51290496346962
17.90349001294706 59.51293357301443 17.903350872134816 59.51296996869675 17.903197354715907 59.51298070077925
17.902997747810545</gml:posList>
                            </gml:LinearRing>
                        </gml:exterior>
                    </gml:PolygonPatch>
                </gml:patches>
            </gml:Surface>
        </lcv:geometry>
    </lcv:LandCoverUnit>
</wfs:member>

```

```
        </gml:patches>
      </gml:Surface>
    </lcv:geometry>
    <lcv:LandCoverObservation>
      <lcv:LandCoverObservation>
        <lcv:class xmlns:xlink="http://www.w3.org/1999/xlink" xlink:href="
http://inspire.ec.europa.eu/codelist/LandCoverClassValue/naturalMaterialSurface"/>
        <lcv:mosaic>
          <lcv:LandCoverValue>
            <lcv:class xsi:nil="true" nilReason="other:unpopulated"
/>
            <lcv:coveredPercentage>"other:unpopulated"</lcv:
coveredPercentage>
          </lcv:LandCoverValue>
        </lcv:mosaic>
        <lcv:observationDate>"other:unpopulated"</lcv:observationDate>
      </lcv:LandCoverObservation>
    </lcv:LandCoverObservation>
  </lcv:LandCoverUnit>
</wfs:member>
</wfs:FeatureCollection>
```