

PRODUCT DESCRIPTION

Dossier direct

DOKUMENTVERSION: 5.0

Figure 1. Example of a map in a dossier.

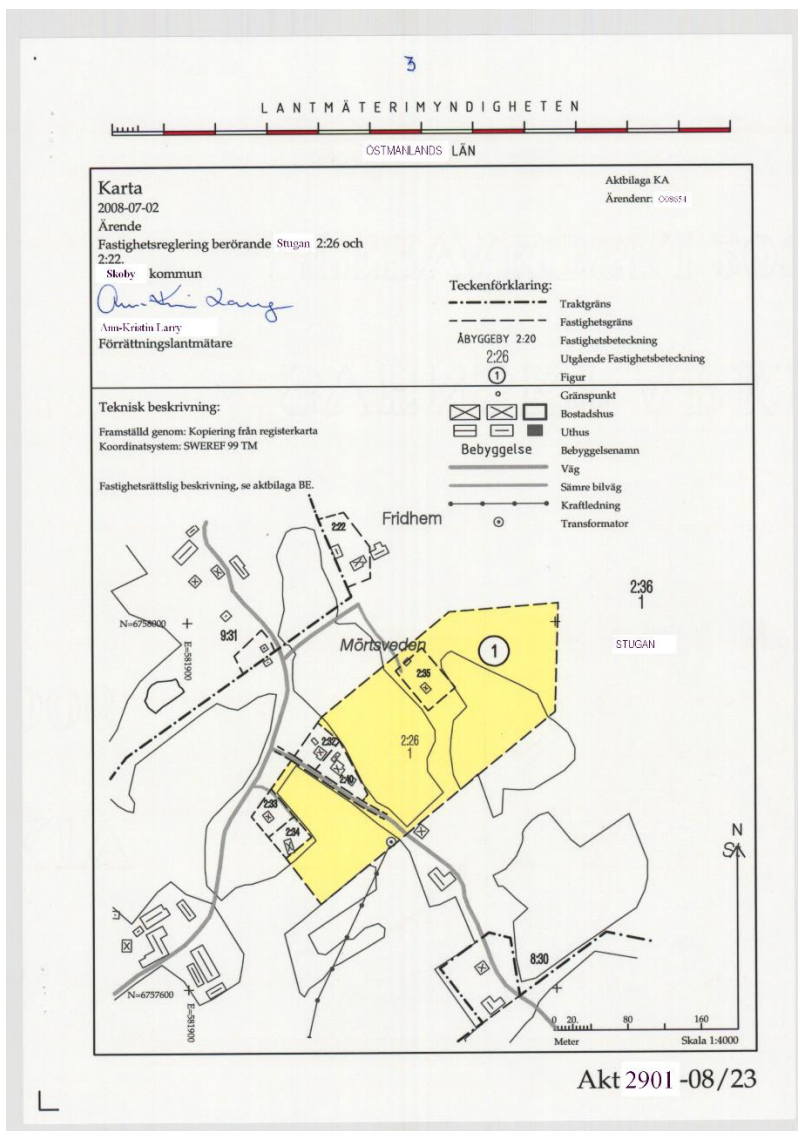


Table of contents

1	GENERAL DESCRIPTION	3
1.1	GEOGRAPHICAL COVERAGE	3
1.2	COORDINATE SYSTEM	3
2	QUALITY DESCRIPTION	4
2.1	PURPOSE AND UTILITY	4
2.2	DATA CAPTURE	4
2.2.1	<i>Lineage</i>	4
2.3	MAINTENANCE	5
2.3.1	<i>Maintenance frequency</i>	5
2.4	QUALITY OF DATA	5
2.4.1	<i>Location accuracy</i>	5
2.5	METADATA	5
3	CONTENT OF THE DELIVERY	6
3.1	RETRIEVE DOSSIER	6
4	LIST OF CHANGES	7

I General description

Dossier direct contains dossier that are in the National Land Survey's archive, the Swedish mapping, cadastral and land registration authority. The service provides dossier from state and municipal cadastral archives that are available at the National Land Survey. The dossier is provided in two formats, DjVu and PDF. To view the dossier, you need an image viewer that can display images in the selected format. The service has a programming interface. Detailed information can be found in the technical description for Dossier direct.

All changes to a property take place through a surveying service and the result is archived for all time in a dossier. These dossiers usually contain a map with associated documents and describes how the property was formed or if it has changed from its origin. The document describes how the cadastral procedure has been carried out and what decisions have been made, as well as information about communities, community facilities, easements and rights.

The archives also include detailed plans and other land regulations.

The information in the Real Property Register has been retrieved from the dossier's, which means that the complete documentation about a property is in the dossier. There is more dossier than those that are linked to the Real Property Register because not all dossiers are registered in the property register. To find these files, you can use ArkivSök (FileSearch).

I.1 Geographical coverage

The maps and dossier provided from Lantmäteriet's archives via Dossier direct come from cadastral procedures conducted throughout almost all of Sweden.

I.2 Coordinate system

In the oldest dossier there is no coordinate system. For the maps in newer dossier, the coordinate system used is shown on the map or in the document.

Horizontal: SWEREF 99 TM and associated local zones (used in maps since 2001)

2 Quality description

The map together with the documents that contains decisions and protocol constitute legal documents that have legal effect.

2.1 Purpose and utility

Dossier direct provides access to some of the dossier in Lantmäteriet's archive. To use the service, you must have an application and software that can open the dossier in the service.

The user must be able to use the dossier in their own system / software.

Examples of possible uses are;

- cadastral procedure
- archive investigations
- community planning
- planning of infrastructure
- forestry
- property management
- estate agent

2.2 Data capture

2.2.1 LINEAGE

The material has been added by cadastral surveyors who have created dossier, maps and/or documents, over a geographical area or several properties. These documents have then been scanned or archived digitally and are available via Dossier direct. The map material is not georeferenced.

For the scanned material, most of the maps are scanned in color and have a resolution of 254 dpi. The documents have been scanned in black and white with a resolution of 200 dpi. As of March 2018, maps and documents are scanned in color with a resolution of 300 dpi.

All material that is archived digitally from Lantmäteriet's processing system has a resolution of 300 dpi. This is material at the earliest from the year 2008 onwards, depending on when the surveying office started digital archiving.

All dossier in TIFF format is displayed as a DjVu dossier or PDF dossier in Dossier direct. All images in the DjVu dossier are compressed from the TIFF files. In the PDF dossier, the original of the black and white images is loaded directly into the PDF dossier as TIFF files and the color or grayscale images are compressed to JPEG before being loaded into the PDF dossier.

2.3 Maintenance

The archives are updated from Lantmäteriet's processing system for property formation. There may be supplementary scans from existing analogue surveying archives. Work is underway to scan analogous dossier from the municipalities' building committee archives so that they become searchable in Lantmäteriet's archives.

2.3.1 MAINTENANCE FREQUENCY

The information in the service is updated daily with administrative documents from the state and municipal Cadastral Authorities in connection with property development.

2.4 Quality of data

2.4.1 LOCATION ACCURACY

The position accuracy of the maps depends on when they were created. The maps have been produced over a long period of time and with widely differing measurement methods. For e.g., the boundary points, the position accuracy can vary from a few centimeters to a few meters.

On the older maps, the internal position accuracy (how the objects are in relation to each other on the ground) is very good, but there is no information about the external position accuracy (how the objects are located in Sweden).

Since the 1990s, the measurement has taken place with satellite positioning with the recommended positional accuracy according to the Handbok I mät- och kartfrågor (Handbook of measurement and map issues), HMK. With satellite positioning, both internal and external position accuracy is very good.

The position accuracy is stored in the form of mean errors given in millimeters.

2.5 Metadata

The service only provides dossier, without related metadata. To be able to use the service, it is required that you have access to a dossier designation, for example from Lantmäteriet's Real Property Register.

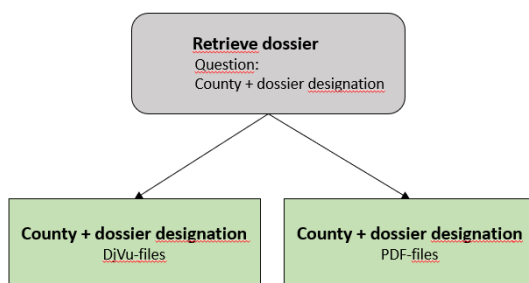
3 Content of the delivery

3.1 Retrieve dossier

A dossier is retrieved by entering the county and the dossier designation. A dossier can contain one or more images.

This service sends a request to retrieve a dossier from Lantmäteriet's archive and the answer that is returned is all the pictures in the dossier. It is when all the images in the dossier are retrieved that the selected image viewer opens the dossier. This means that dossier with many images may take longer to open than dossier with few images.

Figure 2. Illustration of how the information is connected, how questions are asked and what information is given in the answer.



Option 1

To be able to watch a DjVu, a DjVu viewer is required. There are several options today, for example;

- Download dossier and view dossier in a separate program, DjVu Viewer
- Download dossier with simplified DjVu viewer, html5

Option 2

To be able to view a PDF, a PDF viewer is required. There are several options today, for example;

- Download dossier and view dossier in a separate application, Adobe Acrobat Reader
- Download dossier and view directly in the browser's PDF viewer

For more information, see the technical description for Dossier direct

4 List of changes

Table 1. Table of change list.

Version	Date	Reason and change from previous version
1.0	2018-12-04	New document.
2.0	2020-06-01	The document has change under Chapter 3 Functions. Changed way to download dossier.
4.0	2021-06-21	Changed version from 2.0 to 4.0 to better match the version of the technical description on the access point.
5.0	2022-09-26	Added information that the provision of dossier can also be done in PDF format, not just DjVu format. Both formats can be downloaded in the same service. Changed the image in Figure 2.