

CAMERA CALIBRATION CERTIFICATE

WILD LENS CONE / ~~CAMERA~~

NO. 30 AT II NO. 4140

TYPE: RC 10



CAMERA CALIBRATION

LENS : 30 AT II NO.: 20414 CALIBRATION DATE: 78/03/21

FILTER ON CAMERA: ----
APERTURE F / 4.0

PRINCIPAL DISTANCE (850 M) 304.08 MM

DISTORTION (MICROMETERS)

POSITIVE VALUES DENOTE IMAGE DISPLACEMENT AWAY FROM CENTER.

RADIUS MM	SEMI-DIAGONAL				MEAN
	1	3	2	4	
0	0	0	0	0	0
10	-2	-1	-1	-3	-2
20	-6	-2	-3	-5	-4
30	-6	-4	-4	-7	-5
40	-4	-3	-4	-7	-5
50	-5	-3	-3	-3	-3
60	-1	0	-3	-3	-2
70	2	2	2	1	2
80	5	6	5	3	5
90	6	7	5	5	6
100	7	6	5	5	6
110	4	4	4	3	4
120	2	1	1	0	1
130	-2	-1	-2	-2	-2
140	-4	-5	-4	-3	-4
148	-3	-3	-6	-4	-4

RESOLVING POWER (LINE PAIRS PER MILLIMETER)

CONTRAST (LOG) 2.0 APERTURE: 4.0 FILM: AGFAPAN 25 PROFESSIONAL

ANGLE (DEG.)	0	5	10	15	20	25
RAD.	84	84	83	32	31	30
TANG.	84	66	58	39	47	44
AWAR	46					

CAMERA CALIBRATION

LENS : 30 AT II

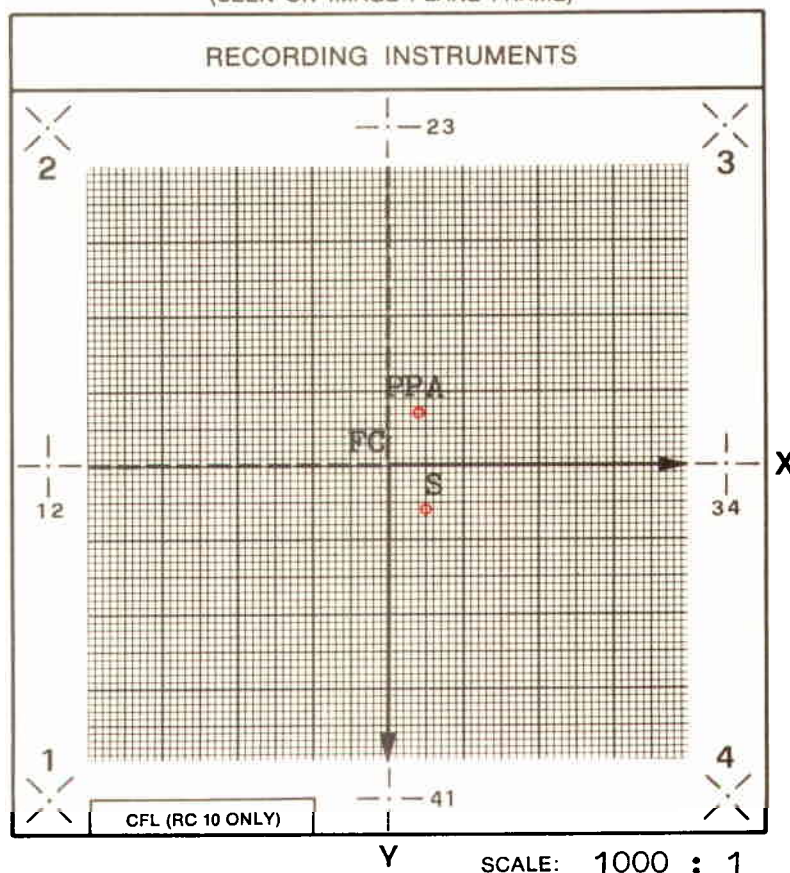
NO.: 20414

CALIBRATION DATE: 78/03/21

POINT	X MM	Y MM
FC	0.000	0.000
S	.005	.006
PPA	.004	-.007
1	-105.999	106.001
2	-105.999	-106.002
3	105.997	-105.999
4	106.000	106.002

S : POINT OF BEST SYMMETRY
PPA : PRINCIPAL POINT OF AUTOCOLLIMATION

(SEEN ON IMAGE PLANE FRAME)

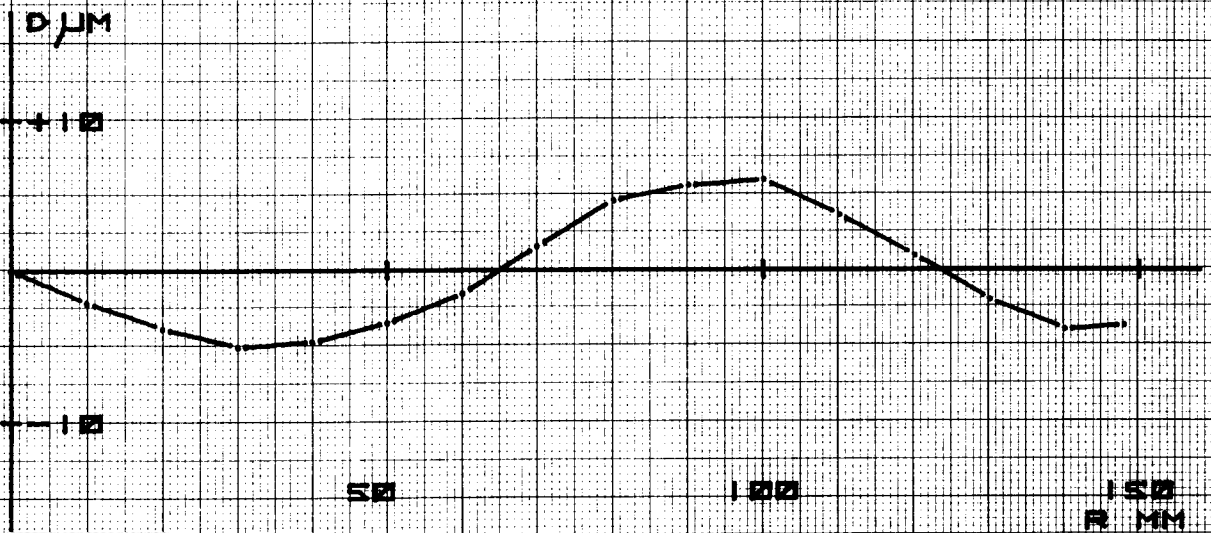


Handwritten signature or mark

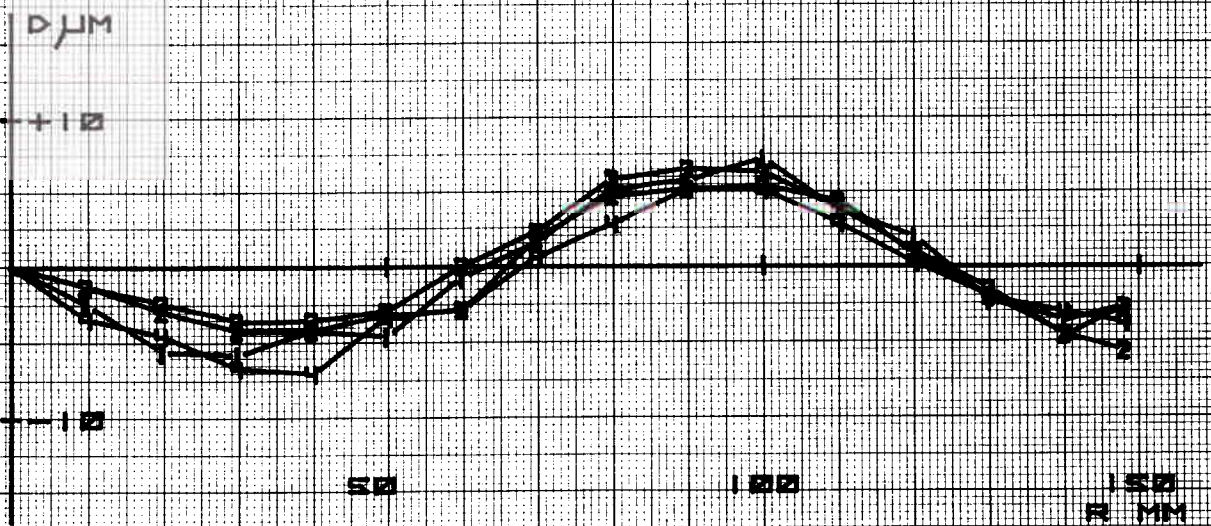
30 AT 11 NO. 4140

78/03/21

P.D. <850 M> 304.00 MM
FILTER ON CAMERA ----
APERTURE F/4.0



MEAN DISTORTION CURVE



ORIGIN : POINT OF SYMMETRY

WILD HEERLEBUEG LTD