

## **CAMERA CALIBRATION CERTIFICATE**

**WILD LENS CONE / ~~CAMERA~~**

**NO. 15 UAG NO. 355**

**TYPE: RC5/RC8**

**THIS CALIBRATION CERTIFICATE REPLACES THE  
PREVIOUS CERTIFICATE ISSUED ON 68/04/19**

# CAMERA CALIBRATION

LENS : 15 UAG

NO.: 355

CALIBRATION DATE: 76/03/19

FILTER ON CAMERA: ----

APERTURE F / 5.6

CALIBRATED FOCAL LENGTH 152.50 MM

## DISTORTION (MICROMETERS)

POSITIVE VALUES DENOTE IMAGE DISPLACEMENT AWAY FROM CENTER.

RADIUS MM	SEMI-DIAGONAL				MEAN
	1	3	2	4	
0	0	0	0	0	0
10	-1	1	0	0	0
20	2	4	3	2	3
30	3	4	4	4	4
40	3	6	5	5	5
50	5	4	5	5	4
60	1	3	5	4	3
70	3	3	3	4	3
80	0	-1	1	2	0
90	0	-2	-1	0	-1
100	-3	-3	-3	-3	-3
110	-6	-6	-4	-4	-5
120	-7	-8	-5	-6	-6
130	-6	-5	-5	-6	-5
140	2	-1	-1	0	0
148	9	11	10	11	10

## RESOLVING POWER (LINE PAIRS PER MILLIMETER)

CONTRAST (LOG) 2.0    APERTURE: 5.6    FILM: AGFAPAN 25 PROFESSIONAL

ANGLE (DEG.)	0	5	10	15	20	25	30	35	40	45
RAD.	53	53	52	51	50	38	46	49	23	7
TANG.	53	53	51	49	47	49	45	40	44	19
AWAR	43									

*S*

# CAMERA CALIBRATION

LENS : 15 UAG

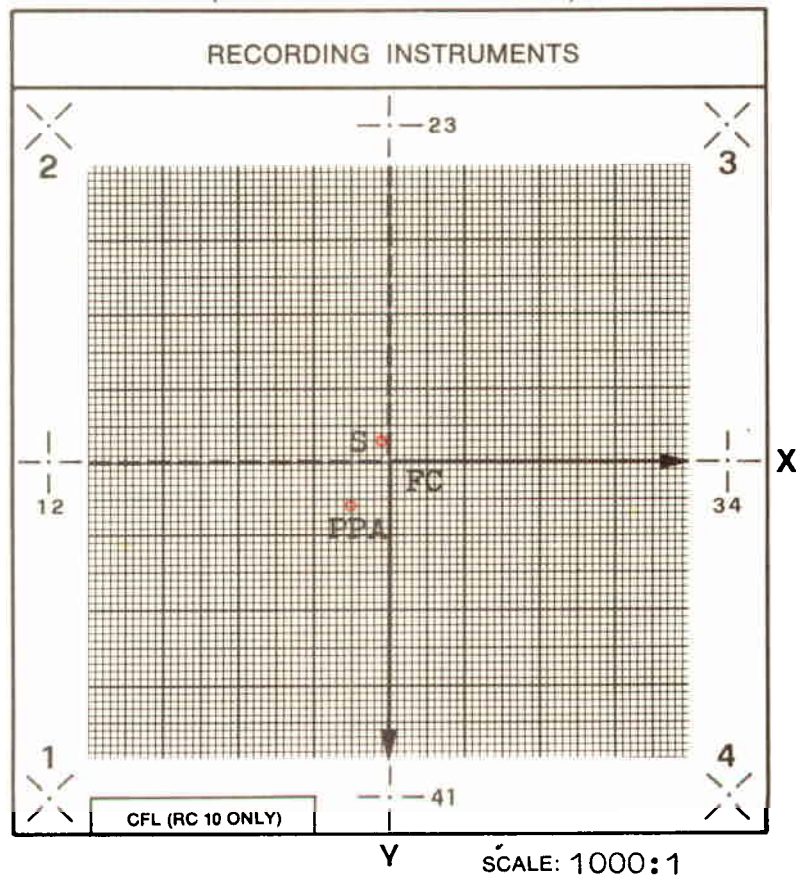
NO.: 355

CALIBRATION DATE: 76/03/19

POINT	X MM	Y MM
FC	0.000	0.000
S	-.001	-.003
PPA	-.005	.006
1	-105.984	105.988
2	-106.001	-106.005
3	105.996	-105.999
4	105.998	106.001

S : POINT OF BEST SYMMETRY  
PPA : PRINCIPAL POINT OF AUTOCOLLIMATION

(SEEN ON IMAGE PLANE FRAME)

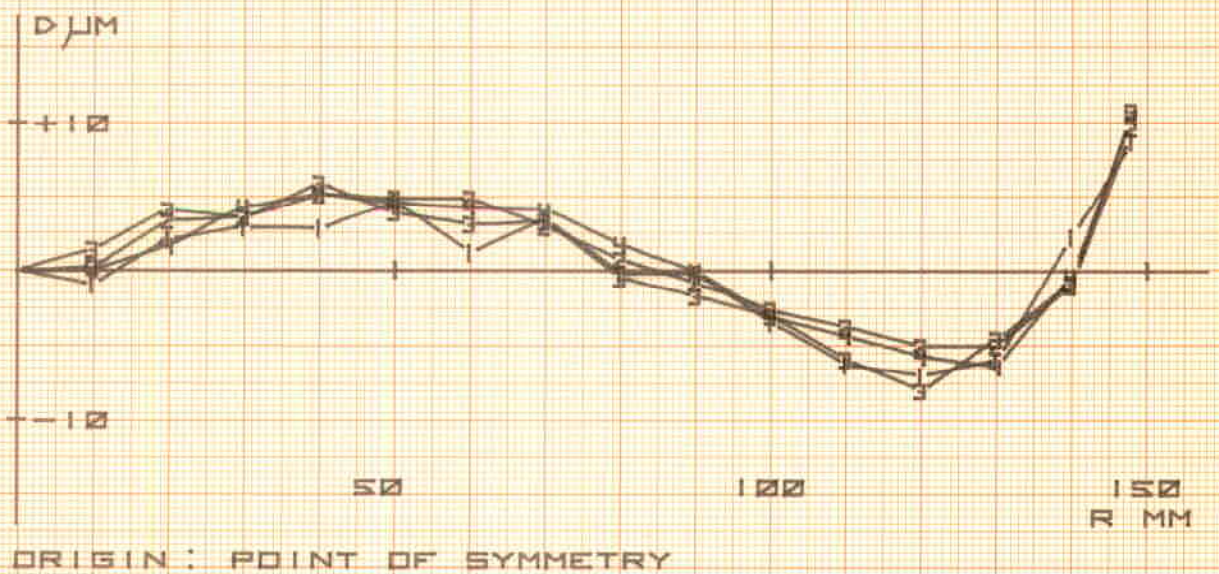
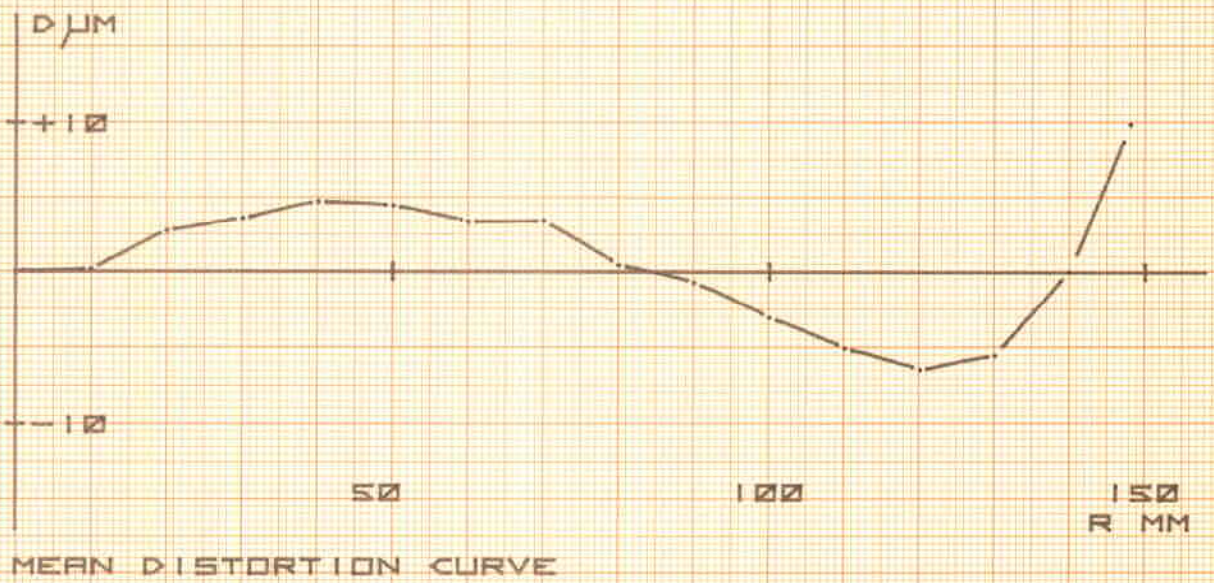


*Handwritten mark*

15 UAG NO. 355

76/03/19

C.F.L. 152.50 MM  
FILTER ON CAMERA ----  
APERTURE F/5.6



WILD HEERBRUGG LTD

*Handwritten signature or initials*